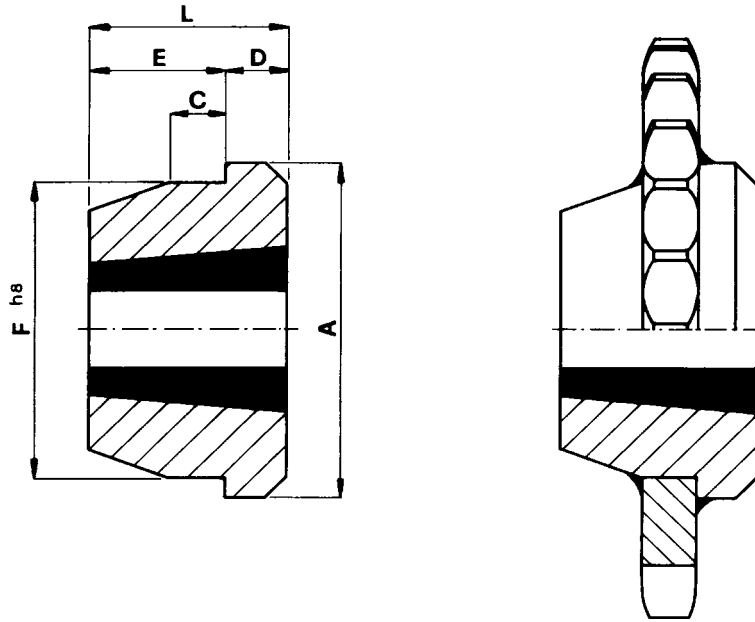


Weld-on-Hub "European" Metric Taper-Bushings



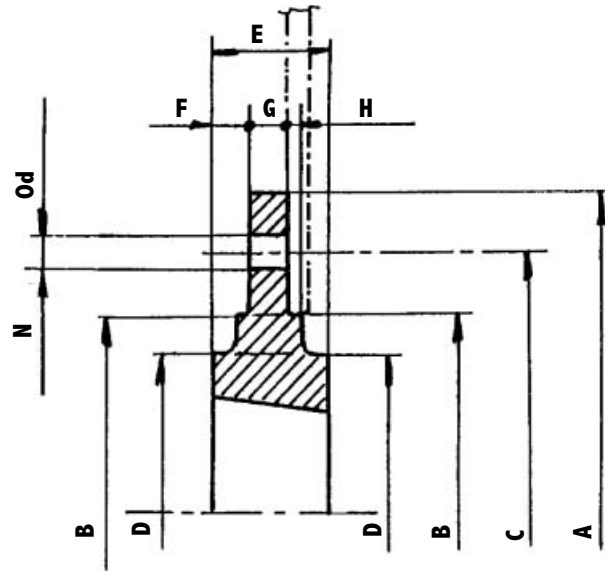
Part No.	Bushing*	Outside Dia.					Seat Dia. Ø F ^{h8}
		Ø A	L	C	D	E	
WHTL.1210	1210	70	25	10	9	16	60
WHTL.1610	1610	83	25	10	9	16	70
WHTL.1615	1615	83	38	11	16	22	70
WHTL.2012	2012	95	32	12	12	20	90
WHTL.2517BSW	2517 BSW	127	44	13	19	25	110
WHTL.3020	3020	152	50	15	20	30	130
WHTL.3030	3030	152	76	19	25	51	130
WHTL.3535BSW	3535 BSW	184	87	25	32	57	155
WHTL.4040	4040	225	102	32	32	70	195
WHTL.4545BSW	4545 BSW	254	114	38	38	76	220
WHTL.5050	5050	276	127	38	38	89	242

*Bushing types 2517, 2525, 3535 and 4545 are made to "European" specifications, with 1/2" x 12tpi BSW set screws. BSW (British Whitworth) threads are completely interchangeable with ANSI (American Standard Unified) except in the case of 1/2".

Note: also available

WHTL.2517ANSI
WHTL.3535ANSI
WHTL.4545ANSI

Bolted Sprocket Hubs



Part Number	Bushing	A	B	C	D	E	F	G	H	N	Od
BHTL 120.1210	1210	120	80	100	70	25	9	7.5	2.5	6	7.5
BHTL 130.1610	1610	130	90	110	80	25	9	7.5	2.5	6	7.5
BHTL 145.2012	2012	145	115	125	95	32	12	9.5	2.5	6	9.5
BHTL 185.2517BSW	2517	185	130	155	115	45	19	12.5	2.5	6	11.5
BHTL 220.3020	3020	220	165	190	145	51	19	12.5	2.5	6	13.5

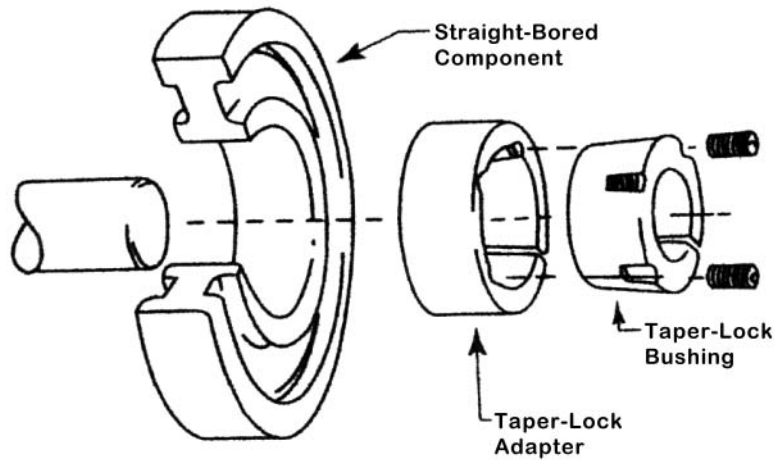
These parts are made from cast iron.

Part Number	Bushing	A	B	C	D	E	F	G	H	N	Od
BHTL 180.1210	1210	180	90	135	75	25	9.25	6.5	2.5	6	7.5
BHTL 200.1615	1615	200	110	150	85	38	15.3	7.5	2.5	6	7.5
BHTL 270.2012	2012	270	140	190	110	32	11.8	8.5	2.5	6	9.5
BHTL 340.2517BSW	2517	340	170	240	125	45	17.8	9.5	2.5	8	11.5
BHTL 430.3020	3020	430	220	300	160	51	18.8	13.5	2.5	8	13.5
BHTL 485.3020	3020	485	250	340	160	51	18.8	13.5	2.5	8	13.5

These parts are made from steel.

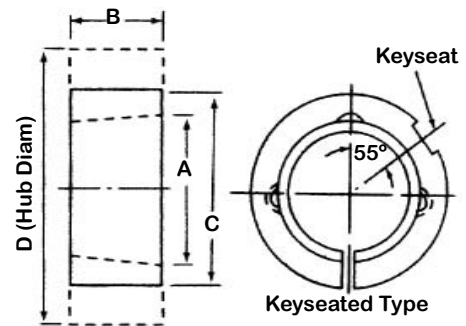
Ordering Example:
BHTL 120.1210
BHTL 180.1210

Steel Locking Ring Adaptor for Taper Bushing



Locking Ring Adaptor for Taper Bushings have the advantage of only require moderate tolerance straight-through bore and keyseat, thereby eliminating the precision machining required to produce a seat for a Taper Bushing.

The Locking Ring Adaptor is split with a gap so when the Taper Bushing is tightened the Locking Ring Adaptor expands to "seat" against the straight-through bore while clamping tightly on the shaft.



Part No.	A	B	C	D	Keyseat	Wt./Lbs.
TLA 1008-S	1 3/8	7/8	1 3/4	3	3/16 x 3/32	0.5
TBA 1215B-S	1 7/8	1 1/2	2 3/8	3 1/4	1/4 x 1/8	0.7
TBA 1615B-S	2 1/4	1 1/2	2 3/4	3 1/2	3/8 x 1/8	0.9
TBA 2517B-S-ANSI	3 3/8	1 3/4	4 1/8	5	5/8 x 1/8	2.2
TBA 2517B-S-BSW	-	-	-	-	-	-
TBA 2525B-S-ANSI	3 3/8	2 1/2	4 1/8	5	5/8 x 1/8	3.2
TBA 2525B-S-BSW	-	-	-	-	-	-
TBA 3030B-S	4 1/4	3	5 1/8	6 1/4	3/4 x 3/16	5.8
TBA 3535B-S-ANSI	5	3 1/2	6 1/4	7 7/8	7/8 x 3/16	11.3
TBA 3535B-S-BSW	-	-	-	-	-	-
TBA 4040B-S	5 3/4	4	7 1/4	9 3/8	1 x 3/16	17.3
TBA 4545B-S	6 3/8	4 1/2	7 7/8	10 1/4	1 x 3/16	21.9